



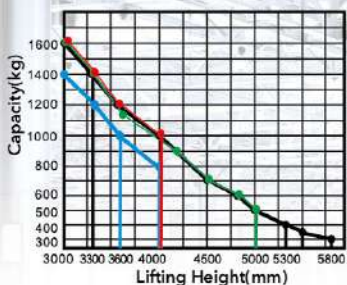
TOP1 FORKLIFT MANUFACTURER AND SALER
IN CHINA FOR CONSECUTIVE 24 YEARS

CDD14/16

1.6 Ton Straddle Electric Stacker

Lifting Height: 1400-5800mm

Load Curve



Advantages

Configuration and Performance

- ⊙ Electronic power steering system, light and low noise.
- ⊙ Two-way magnetic valve, three drop speed mode.
- ⊙ Drive unit floating bodies with patent design.
- ⊙ AC Driving system, No carbon brush, maintenance free.
- ⊙ USA CURTIS driving controller.
- ⊙ Electromagnetic, regenerative braking system.
- ⊙ Automatic lifting limit, proximity switch, long life.

Safety

- ⊙ Curve automatic deceleration devices, more safe.
- ⊙ Vehicle decelerates automatically at higher position.
- ⊙ Stepless speed control system, safe and quiet.
- ⊙ Controller with Multiple automatic protection.
- ⊙ Emergency reversing device/Emergency brake switch.
- ⊙ High position automatic reduction device.

Economical straddle typed stacker

Steering automatic deceleration

AC | EPS Down mode at 3 speeds

Truck automatically decelerates while at higher lifting position

| Type | Lift height (mm) | Mast type | Outside width between legs (mm) | Inside width between legs (mm) |
|------------|------------------------------------|-------------------|---------------------------------|--------------------------------|
| CDD14-920 | 1400/2000/2500/3000/3300/3600/4000 | Standard 2-STAGE | | |
| CDD16-D920 | 1400/2000/2500/3000/3300/3600/4000 | Standard 2-STAGE | 1170/1320/1470/1650 | 970/1120/1270/1450 |
| CDD16-960 | 3700/3900/4200/4500/4700/5000 | FULL FREE 3-STAGE | | |
| CDD16-360 | 5300/5500/5800 | FULL FREE 3-STAGE | | |

| Feature | | | | | |
|--|------|--|--|-----------------------------------|-------------------|
| Model | | CDD14 | CDD16 | CDD16 | CDD16 |
| Configuration No. | | 920 | D920 | 960 | 360 |
| Type | | Wide legs | Wide legs | Wide legs | Wide legs |
| Mast type | | Standard 2-Stage | Standard 2-Stage | Full free 3-Stage | Full free 3-Stage |
| Load capacity | kg | 1400 | 1600 | 1600 | 1600 |
| Load center | mm | 600 | 600 | 600 | 600 |
| Wheel base | mm | 1310 | 1310 | 1375 | 1375 |
| Operating type | | Walkie/Stand On | | | |
| Wheels | | | | | |
| Wheels type | | PU | PU | PU | PU |
| Wheel quantity Driving wheel/ Balance wheel/Bearing wheel | | 1/2/4 | 1/2/4 | 1/2/4 | 1/2/4 |
| Dimension | | | | | |
| Standard lift height | mm | 1400/2000/2500/3000/ 3300/3600/4000 | 1400/2000/2500/3000/ 3300/3600/4000 | 3700/3900/4200/ 4500/4700/5000 | 5300/5500/5800 |
| Lowered fork height | mm | 55 | 55 | 55 | 85 |
| Fork size(length/width/thickness) | mm | 1070/100/40 | 1070/100/40 | 1070/100/40 | 1070/100/40 |
| Overall length | mm | 2005/2425 | 2005/2425 | 2073/2493 | 2073/2493 |
| Overall width | mm | 1470 | 1470 | 1470 | 1470 |
| Max.extend height | mm | 1900/2500/3000/3500/ 3800/4100/4500 | 1900/2500/3000/3500/ 3800/4100/4500 | 4200/4400/4700/ 5000/5200/5500 | 5800/6000/6300 |
| Mast lowered height | mm | 1185/1535/1765/1980/ 2135/2335/2500 | 1185/1535/1765/1980/ 2135/2335/2500 | 1800/1900/1985/ 2085/2135/2235 | 2520/2590/2690 |
| Min.Turning radius | mm | 1565/1975 | 1565/1975 | 1630/2040 | 1630/2040 |
| Min.Aisle width for pallets 800×1200 | mm | 2230/2560 | 2230/2560 | 2230/2625 | 2230/2625 |
| Min.Aisle width for pallets 1000×1200 | mm | 2260/2585 | 2260/2585 | 2260/2650 | 2260/2650 |
| Min.ground clearance | mm | 50 | 50 | 50 | 30 |
| Performance | | | | | |
| Travel speed,laden/unladen | km/h | 5/5 | 5/5 | 5/5 | 5/5 |
| Lift speed,laden/unladen | mm/s | 130/230 | 130/230 | 130/230 | 130/230 |
| Lowering speed,laden/unladen | mm/s | 130/230 | 130/230 | 130/230 | 130/230 |
| Gradeability,laden/unladen | % | 5/7 | 5/7 | 5/7 | 5/7 |
| Electrical configuration | | | | | |
| Drive motor/Lift motor/Steering motor | kW | AC1.5/DC3/DC0.15 | AC1.5/DC3/DC0.15 | AC1.5/DC3/DC0.15 | AC1.5/DC3/DC0.15 |
| Battery voltage | V | 24 | 24 | 24 | 24 |
| Battery capacity | Ah | 280 | 280 | 280 | 280 |
| Brake | | Electromagnetic/Regenerative | | | |
| Controller | | CURTIS | | | |
| Weight | | | | | |
| Battery weight | kg | 250 | 250 | 250 | 250 |
| Service weight with battery | kg | 1300 | 1370 | 1648 | 1680 |

* Details of specifications and equipment are based on information available at time of printing and may change without notice.



ANHUI HELI INDUSTRIAL VEHICLE IMP. AND EXP. CO., LTD.

ADD: 668 FANGXING ROAD, HEFEI, ANHUI, CHINA
TEL: +8655163639068
FAX: +8655163639966
Email: heli@helichina.net
WEBSITE: WWW.HELICHINA.COM / WWW.HELICHINA.NET